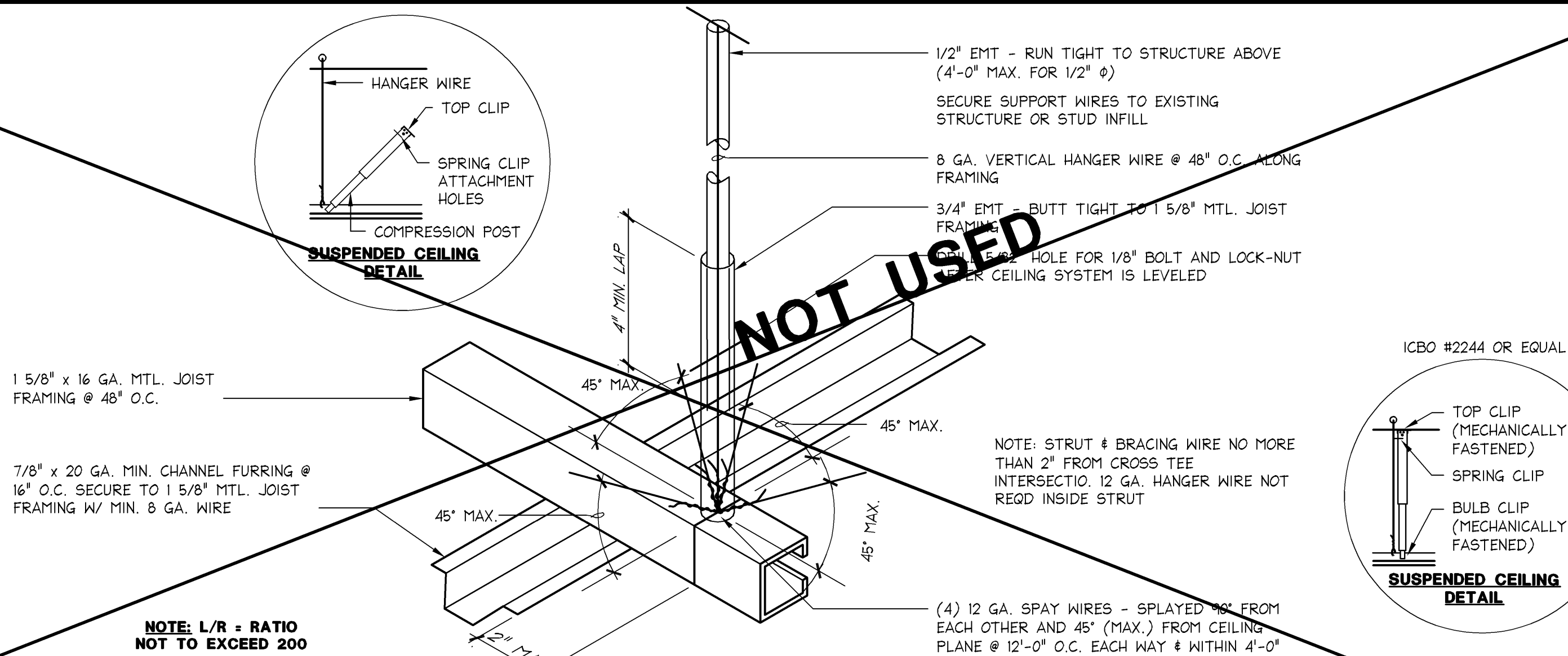


PERFORMANCE REQUIREMENTS:
THE MAIN RUNNERS & CROSS
RUNNERS OF THE CEILING SYSTEM
AND THEIR SPLICES,
INTERSECTION CONNECTORS AND
EXPANSION DEVICES SHALL BE
DESIGNED AND CONSTRUCTED TO
CARRY A MEAN ULTIMATE TEST
LOAD OF NOT LESS THAN 180
POUNDS (801 N) OR TWICE THE
ACTUAL LOAD, WHICHEVER IS
GREATER, IN TENSION WITH
5-DEGREE MISALIGNMENT OF THE
MEMBERS IN ANY DIRECTION, & IN
COMPRESSION, IN LIEU OF
5-DEGREE MISALIGNMENT, THE
LOAD MAY BE APPLIED WITH A
1-INCH (25.4MM) ECCENTRICITY ON
A SAMPLE NOT MORE THAN 24
INCHES (610 MM) LONG ON EACH
SIDE OF THE SPLICE. THE
CONNECTIONS AT SPLICES AND
INTERSECTIONS SHALL ALL BE OF
THE MECHANICAL INTERLOCKING
TYPE.



GYP. BD. CEILING SUSPENSION SYSTEM (SEISMIC)

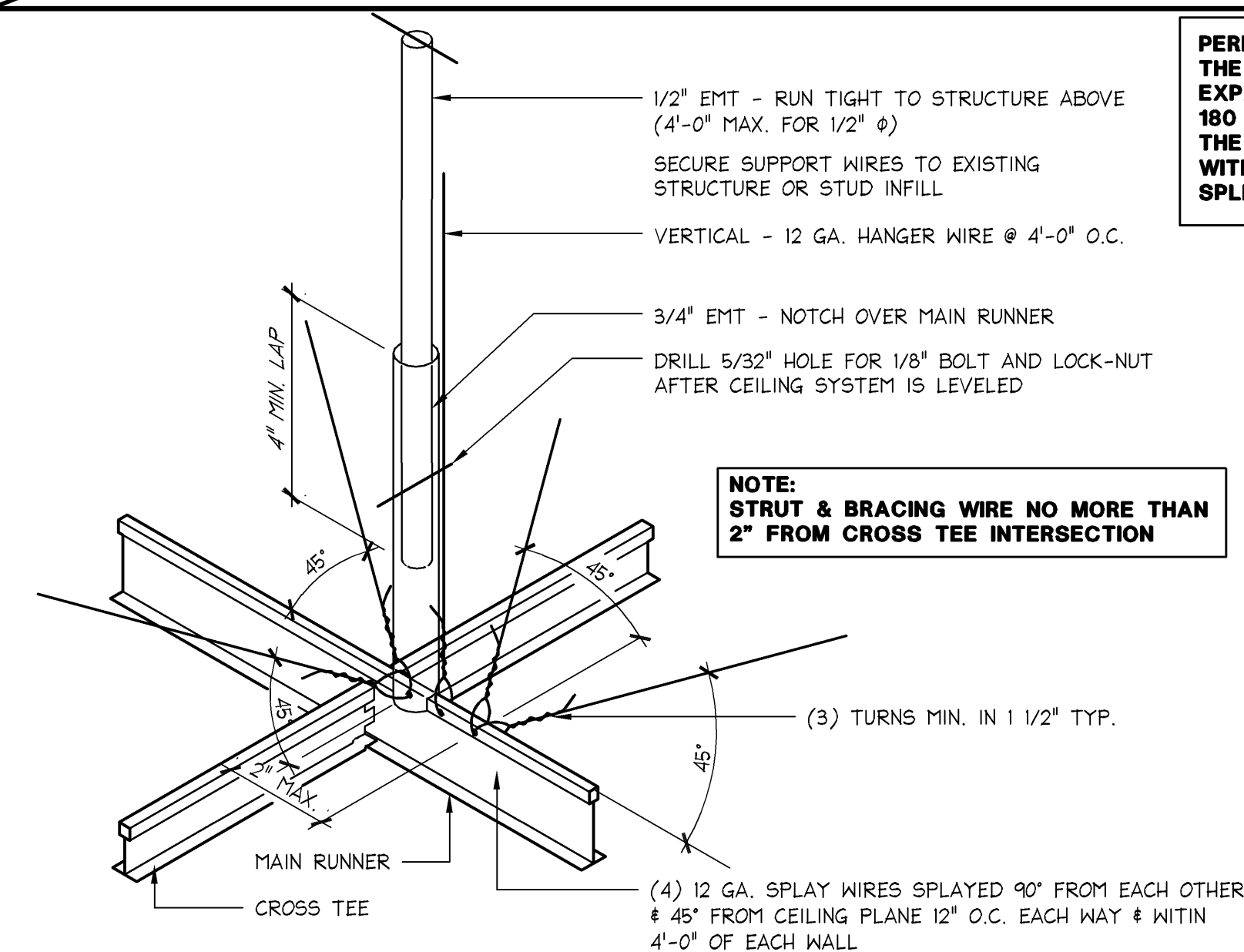
FULL
42D-A123-M00-DET1
08.14.09

TRACK LIGHT - SURFACE MOUNTED

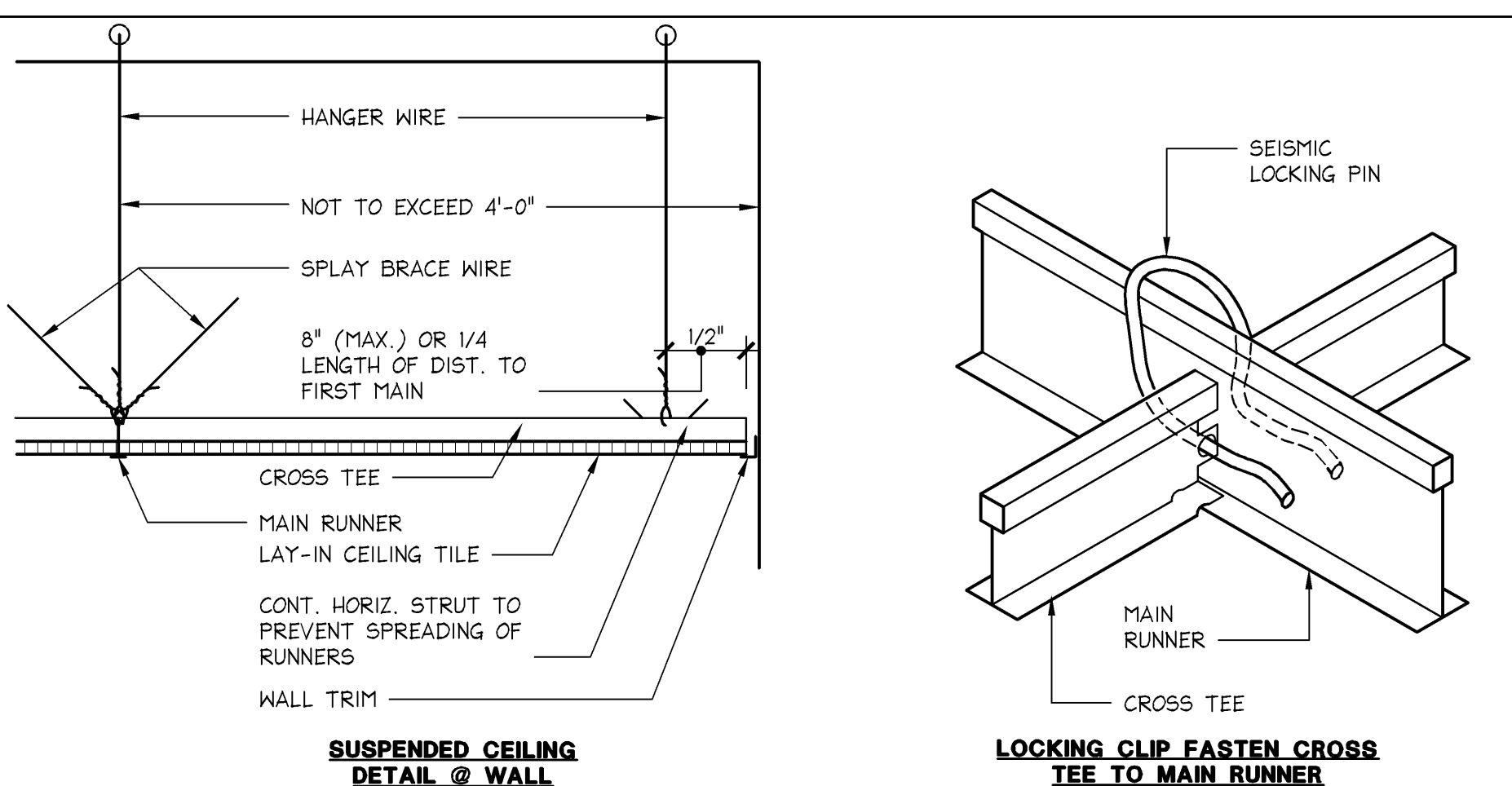
6" ± 1'-0"
42D-A123-D02-DET1
08.14.09

TRACK LIGHT - SURFACE MOUNTED

6" ± 1'-0"
42D-A123-D00-DET1
08.14.09



PERFORMANCE REQUIREMENTS:
THE MAIN RUNNERS & CROSS RUNNERS OF THE CEILING SYSTEM AND THEIR SPLICES, INTERSECTION CONNECTORS AND
EXPANSION DEVICES SHALL BE DESIGNED AND CONSTRUCTED TO CARRY A MEAN ULTIMATE TEST LOAD OF NOT LESS THAN
180 POUNDS (801 N) OR TWICE THE ACTUAL LOAD, WHICHEVER IS GREATER, IN TENSION WITH 5-DEGREE MISALIGNMENT OF
THE MEMBERS IN ANY DIRECTION, AND IN COMPRESSION, IN LIEU OF 5-DEGREE MISALIGNMENT, THE LOAD MAY BE APPLIED
WITH A 1-INCH (25.4MM) ECCENTRICITY ON A SAMPLE NOT MORE THAN 24 INCHES (610 MM) LONG ON EACH SIDE OF THE
SPLICE. THE CONNECTIONS AT SPLICES AND INTERSECTIONS SHALL ALL BE OF THE MECHANICAL INTERLOCKING TYPE.



LAY-IN CEILING SUSPENSION SYSTEM

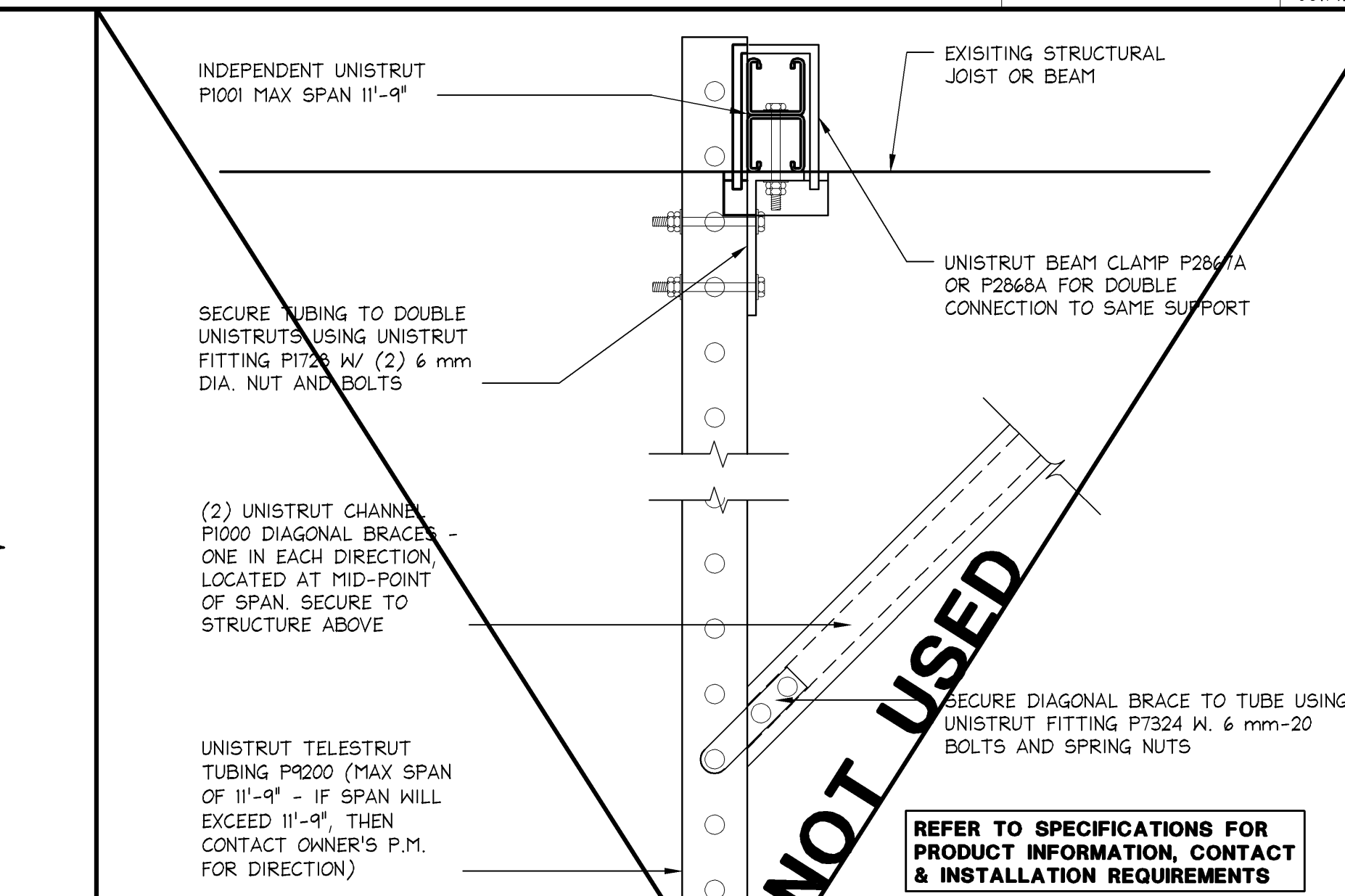
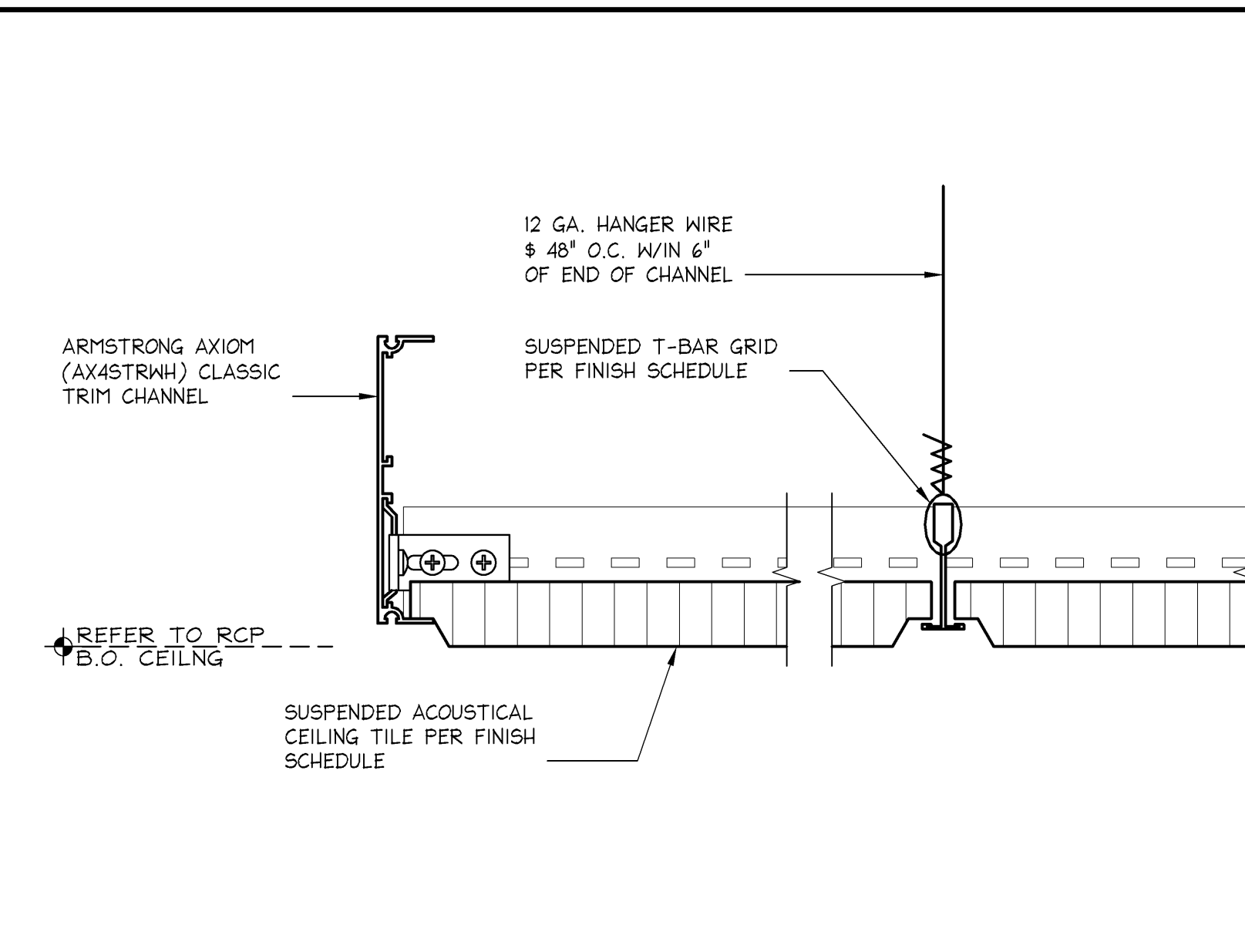
FULL
42D-A123-L00-DET1
08.14.09

FIXTURE ATTACHMENT @ ACT CEILING

3" ± 1'-0"
42D-A123-G00-DET1
08.14.09

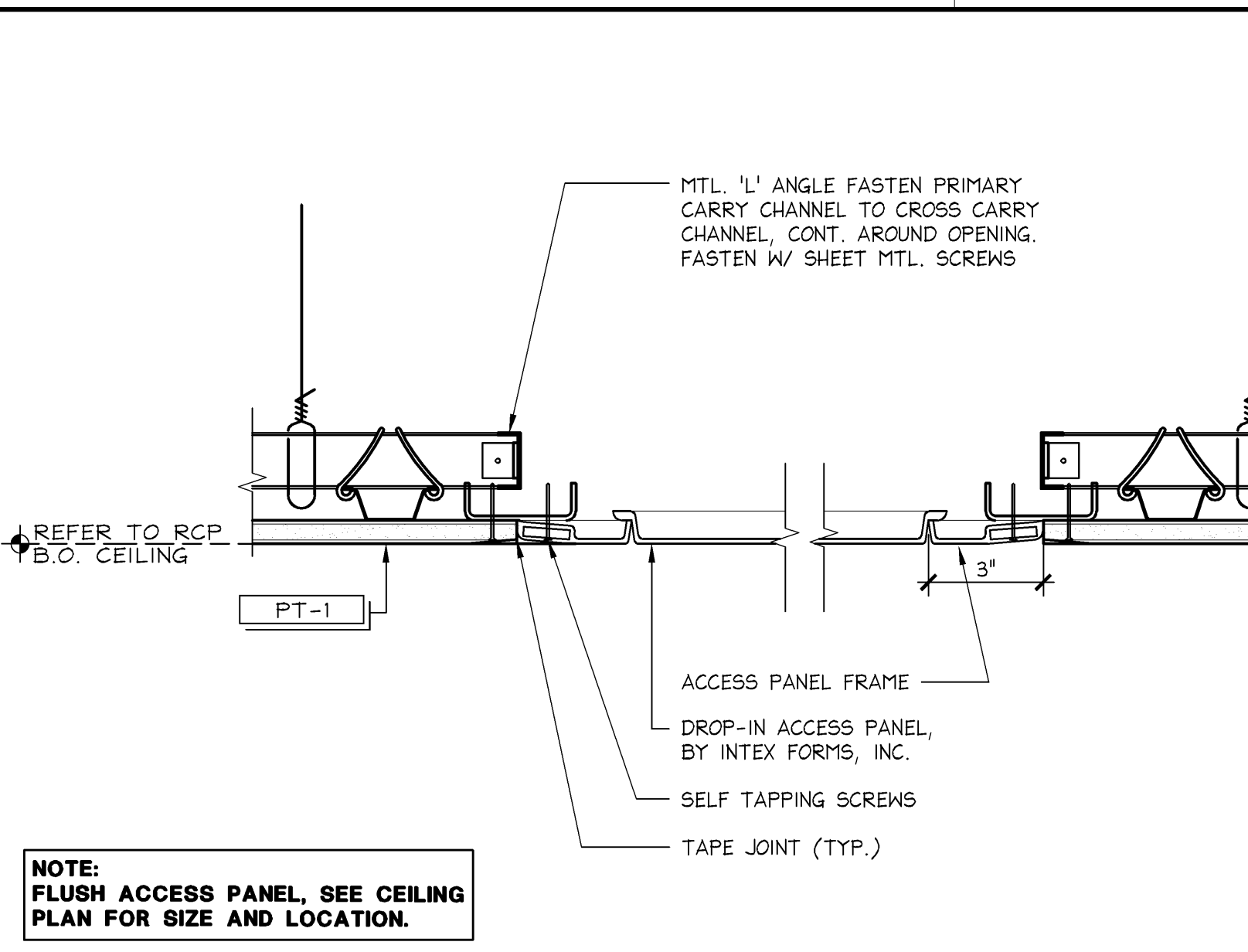
FIXTURE ATTACHMENT @ GYP. CEILING

3" ± 1'-0"
42D-A123-C00-DET1
08.14.09



BREAK AREA SUSPENDED CEILING

6" ± 1'-0"
42D-A123-P00-DET1
08.14.09



ACCESS PANEL @ GYP. BD. CEILING

3" ± 1'-0"
42D-A123-N00-DET1
08.14.09

MONITOR SUPPORT @ CEILING

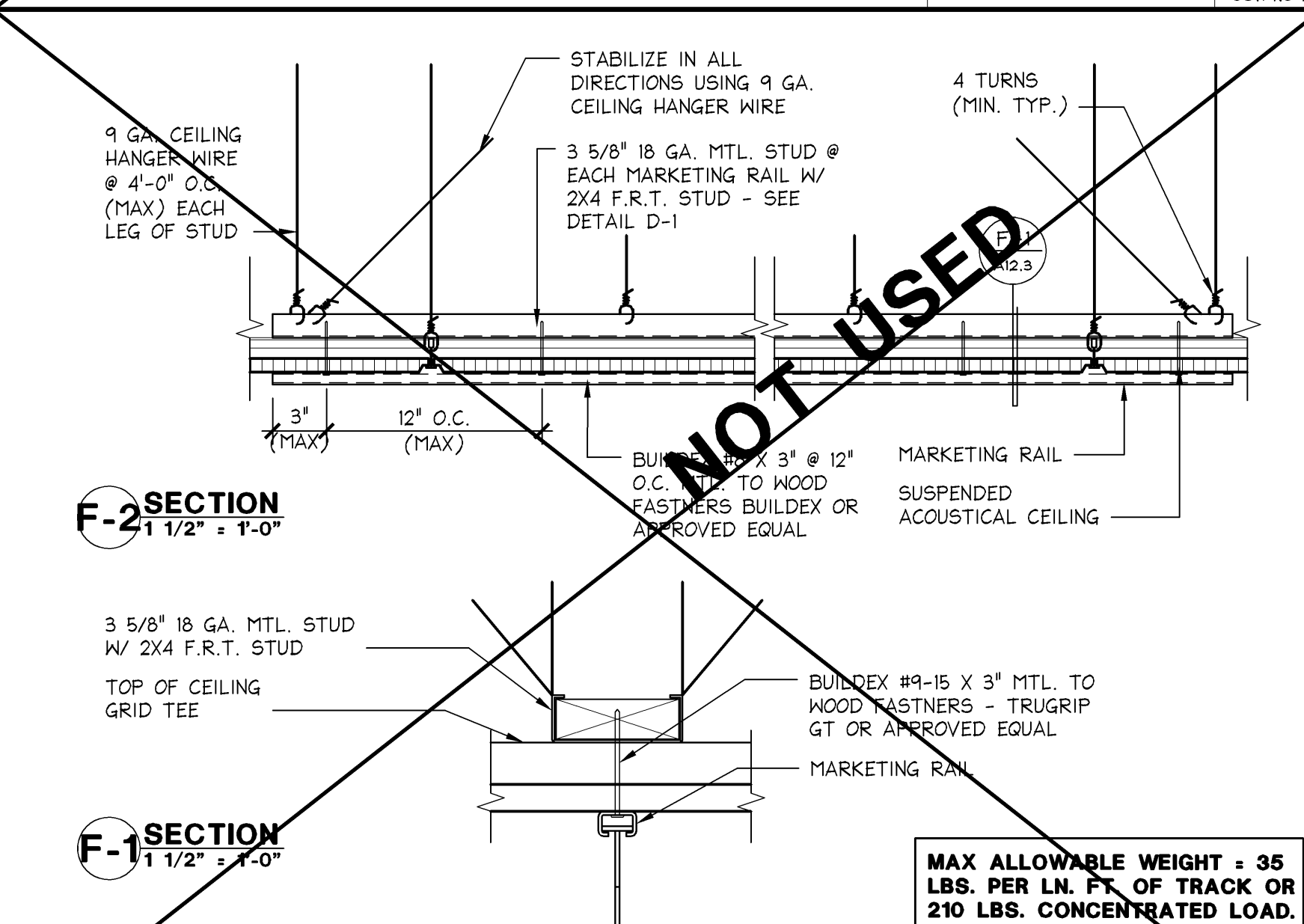
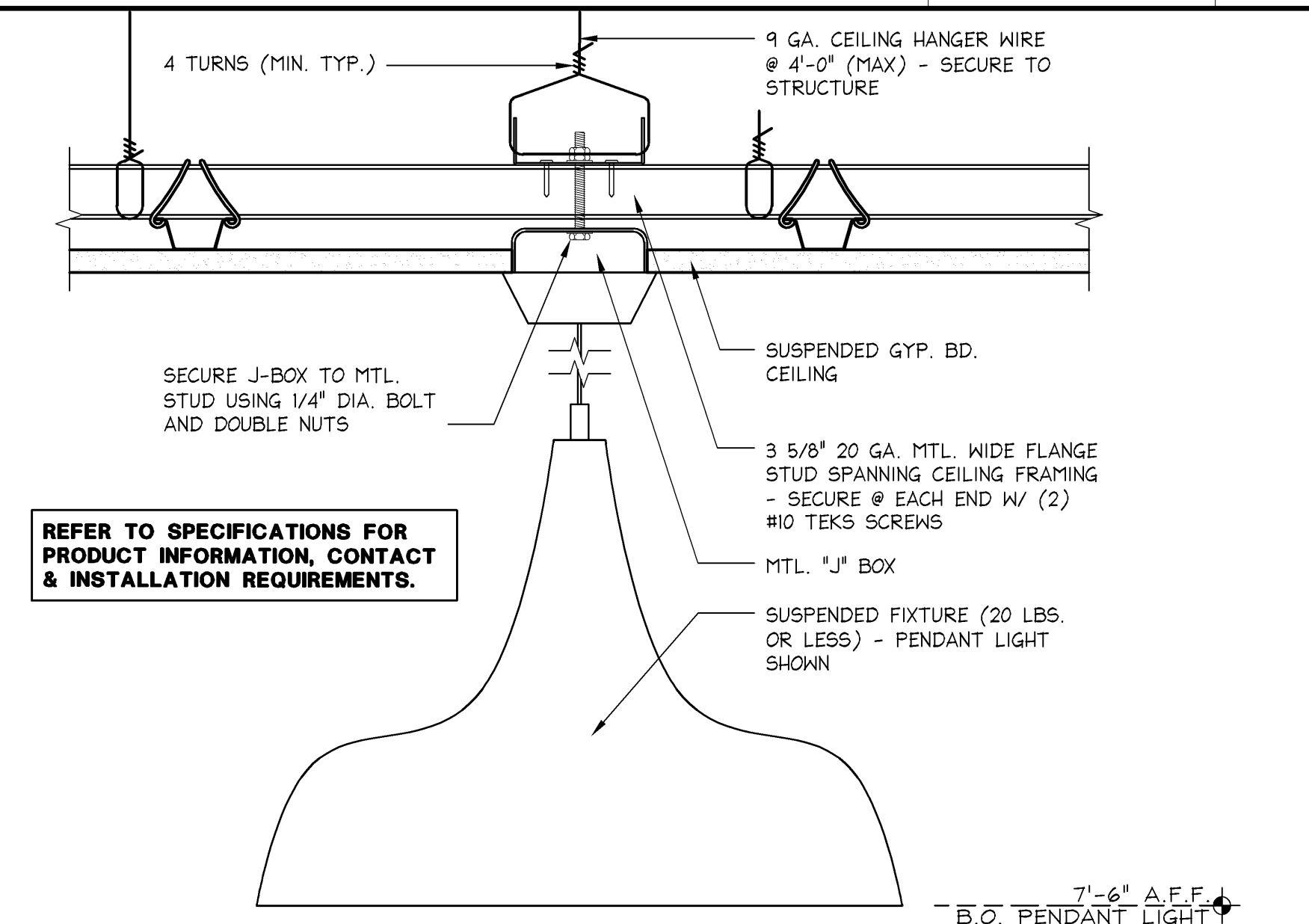
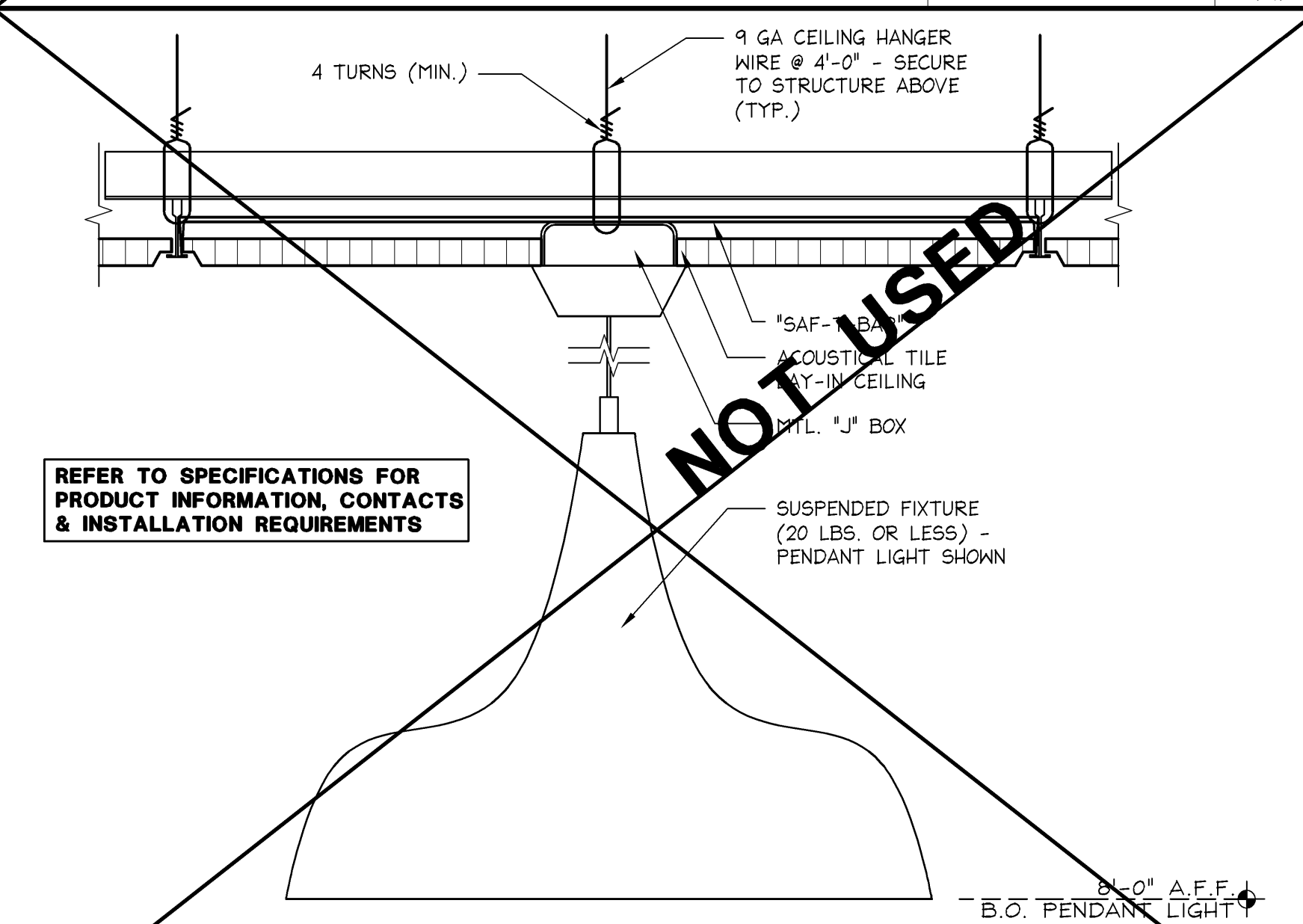
3" ± 1'-0"
42D-A123-J00-DET1
08.14.09

CEILING ASSEMBLY (A.C.T.)

6" ± 1'-0"
42D-A123-E00-DET1
08.14.09

CEILING @ PERIMETER WALL

3" ± 1'-0"
42D-A123-A00-DET1
08.14.09

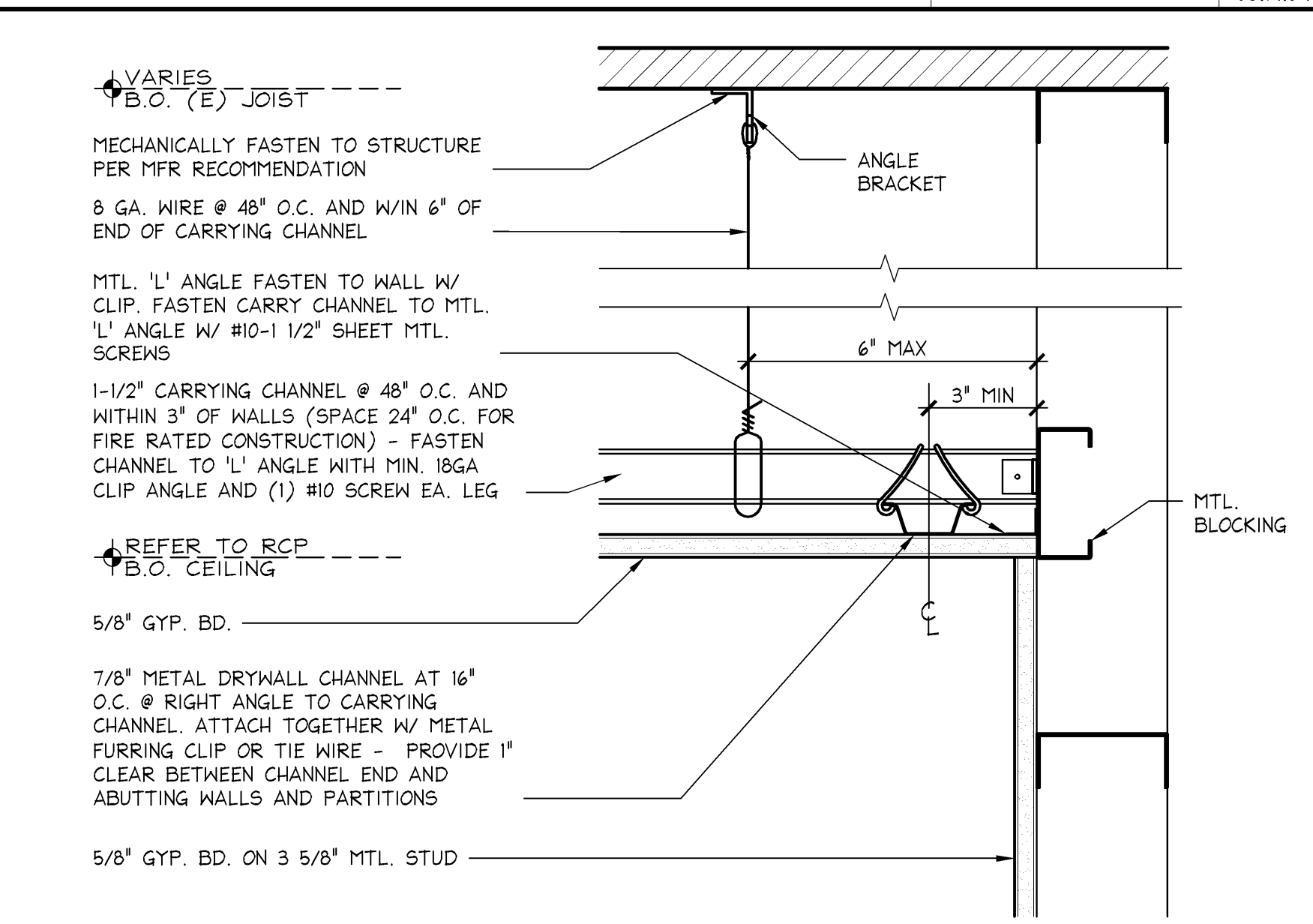
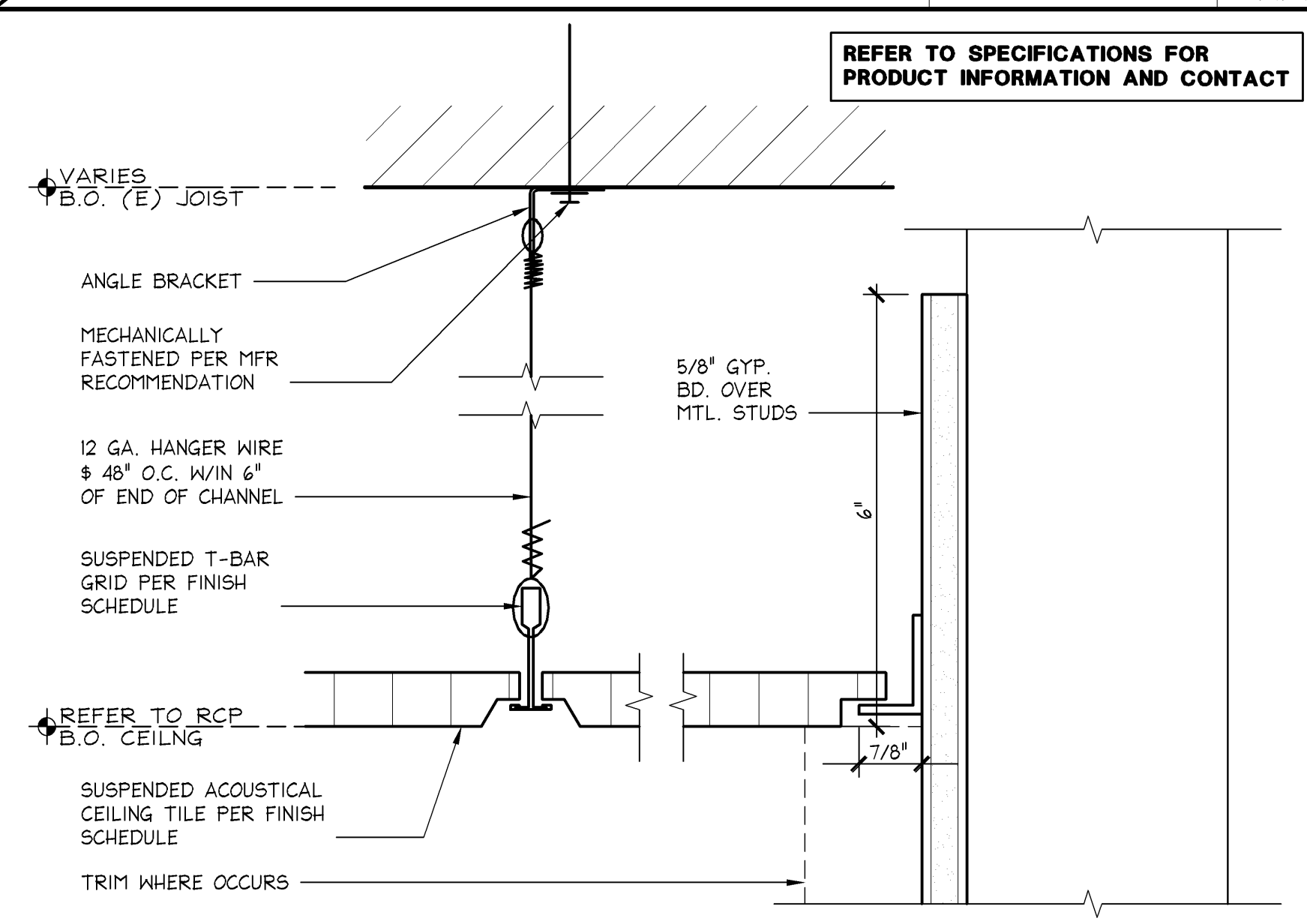


MARKETING TRACK @ ACT CEILING

1 1/2" ± 1'-0"
42D-A123-F00-DET1
08.14.09

MARKETING TRACK @ GYP. BD. CEILING

3" ± 1'-0"
42D-A123-B00-DET1
08.14.09



MOODY-NOLAN
responsive architecture
300 Spruce Street
Suite 300
Columbus, Ohio 43215
Phone: (614) 461-4664
Fax: (614) 280-8881
www.moody-nolan.com

Limited brands
LIMITED STORE PLANNING, INC.
d/b/a STORE DESIGN & CONSTRUCTION
Three Limited Parkway • Columbus, Ohio 43230
Telephone: 614.415.7000 • Fax: 614.415.7349

THESE DRAWINGS AND SPECIFICATIONS ARE THE PROPERTY OF LIMITED BRANDS AND SHALL NOT BE REPRODUCED OR TRANSMITTED IN ANY FORM OR BY ANY MEANS, ELECTRONIC OR MECHANICAL, INCLUDING PHOTOCOPYING, RECORDING, OR BY ANY INFORMATION STORAGE AND RETRIEVAL SYSTEM, WITHOUT THE WRITTEN PERMISSION OF LIMITED BRANDS. ANY UNAUTHORIZED REPRODUCTION OR TRANSMISSION OF THESE DRAWINGS AND SPECIFICATIONS SHALL BE CONSIDERED A VIOLATION OF THE COPYRIGHT LAWS OF THE UNITED STATES OF AMERICA. THESE DRAWINGS AND SPECIFICATIONS ARE NOT TO BE USED FOR ANY OTHER PROJECT WITHOUT THE WRITTEN PERMISSION OF LIMITED BRANDS. THESE DRAWINGS AND SPECIFICATIONS ARE NOT TO BE USED FOR ANY OTHER PROJECT WITHOUT THE WRITTEN PERMISSION OF LIMITED BRANDS. THESE DRAWINGS AND SPECIFICATIONS ARE NOT TO BE USED FOR ANY OTHER PROJECT WITHOUT THE WRITTEN PERMISSION OF LIMITED BRANDS.

024200396
BATH & BODY WORKS
MEMORIAL CITY MALL
303 MEMORIAL CITY WAY
HOUSTON, TX 77024
RELO DOWN / NEW PACKAGE:
EASTON-G GENERATION:
60695 A/E PROJECT #:
14159
13643

REVISIONS:
REVISION 1 - LK / PLUMB COMMENTS 4/27/2014
REVISION 2 - LL / PLUMB COMMENTS 4/27/2014

ELITE CONSTRUCTION GROUP
LAKE JACKSON, TX
PHONE: 979-285-0712
NOTE: THESE PRINTS HAVE BEEN
REPRODUCED BY 50 PERCENT SCALE
WILL BE 50 PERCENT OF WHAT IS
NOTED ON PLANS

DATE ISSUED: 04/11/2014 SF
DESIGNED BY: TSG
DRAWN BY: TSG
CHECKED BY: TBD

CEILING
& LIGHTING
DETAILS

DRAWING NUMBER:
A12.3